

# SpringCharts for Windows Upgrade Guide

Version 9.5  
February 2008

© 2001-2008 Spring Medical Systems, Inc.

# Contents

Overview .....	3
System Requirements.....	3
Verifying the Java Runtime Environment (JRE) .....	5
Upgrading SpringCharts Networking Option .....	7
SpringCharts Networking Option Upgrade Overview.....	7
Upgrading SpringCharts Server (Networking Option) Details.....	7
Upgrading SpringCharts Client (Networking Option) Details .....	11
Upgrading SpringCharts Single Computer Version .....	14
SpringCharts Single Computer Version Upgrade Overview .....	14
Upgrading SpringCharts Single Computer Version Details .....	14
Installation Assistance .....	19

## Overview

SpringCharts is an advanced electronic medical records system for medical offices. SpringCharts is available in two different system configurations: Single Computer, and Networking Option. The upgrade instructions vary slightly for the two configurations, and appear later in this guide.

**The instructions in this document assume that there is an existing version of SpringCharts installed on the computer(s). The upgrade instructions only update SpringCharts. If you are a new user, you must do a complete install of SpringCharts. New installation instructions are beyond the scope of this guide.**

**WARNING: Because of the extensive changes in the custom vitals feature, todos, and chart alerts, Version 9.5 will convert your data files. What this means is that you will not be able to revert back to Version 8, if you so desire. The only way to do so will be to restore from your last Version 8 backup.**

## System Requirements

The system requirements listed below are for SpringCharts running as the only application on the particular computer. Resource requirements need to be adjusted for additional applications that are running on the computer. Overall system requirements are:

- A Local Area Network using TCP/IP as the native protocol (standard Ethernet network).
- A printer.
- Minimum monitor resolution of 800 x 600 (1024 x 768 recommended)
- To use the integrated Email functions, an Internet connection is required (T1, Cable, ISDN, or DSL).
- A CD-ROM drive or network access to a computer with CD-ROM drive.
- Java Runtime Environment (JRE) 1.5\_09 or later must be installed on all Windows, Mac computers which run SpringCharts. (See [Obtaining and installing the Java Runtime Environment](#) section below.)
- 140 MB of disk space is required for the JRE installation.

The minimum requirements for **SpringCharts Single Computer Version** are:

- 800 MHz, or faster, processor.
- 400 MB available disk space (after loading the JRE).

- 1GB of memory (recommended).
- A computer running one of the following operating systems: Windows 2000 or above, or MacOS Tiger (10.4) or above.
- An activation key code and Version 9.5 code. The first time SpringCharts is run, it must be activated with these two keys. These keys should have been received at the time of purchase. If not, please contact your sales representative.

The minimum Server requirements for **SpringCharts Networking Option** are:

- Pentium 4, or faster, processor (Xeon preferred).
- 150 GB available disk space (after loading the JRE). This is primarily for the File Cabinet and local backups.
- 2 GB of memory.
- Two or more computers running the following operating systems: Windows 2000 or above, or MacOS Tiger (10.4) or above. (The computers do not need to be running the same operating system.)
- Your practice's two activation key codes (alpha/numeric "Purchase Key" and SpringCharts "Version 9.5 Key") included in your software shipment. The first time SpringCharts is run, it **MUST** be activated with these two keys. \*Note - These keys should have been received at the time of purchase. If you have any questions, if SpringCharts was purchased through a reseller, please contact your reseller, if purchased directly, please contact your Spring Medical Sales Representative or Spring Medical Support.
- Do not install SpringCharts on a Windows Server that is also going to be a Domain Controller, DNS Server, DHCP Server and Active Directory Server.

The minimum Client requirements for **SpringCharts Networking Option** are:

- 800 MHZ, or faster, processor.
- 25 MB available disk space.
- 1 GB of memory.
- One or more computers running the following operating systems: Windows 2000 or above, or MacOS Tiger (10.4) or above. (The computers do not need to be running the same operating system.)

#### Operating Environment Notice:

SpringCharts is an on-line system that requires uninterrupted access to a minimum level of system resources. As a result, it is recommended

that the SpringCharts Server be located on a dedicated PC when possible (an exception is the database for the practice PMS program).

It is expressly recommended that highly resource-intensive programs and/or programs that may intermittently usurp the majority of system processing capacity or network bandwidth not be run at the same time as SpringCharts. Examples of these types of programs are:

- Virus scans of the entire hard drive (scans of individual files are acceptable)
- Music streaming programs
- And certain backup programs (when activated).

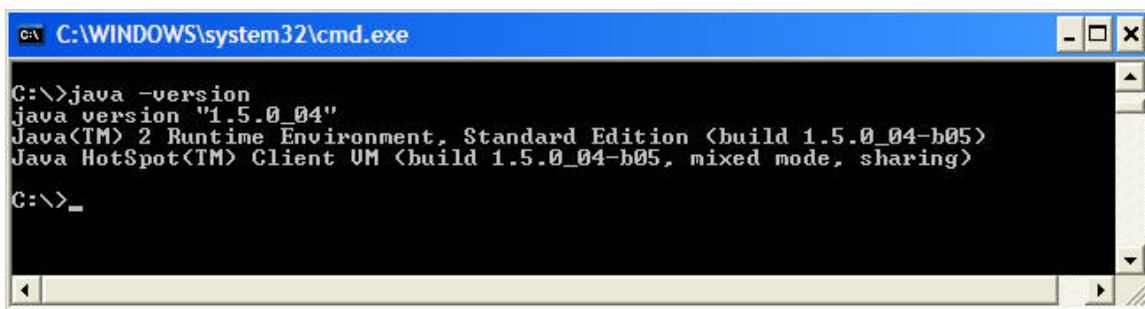
Please also note that additional programs running on the computers will increase the capacity and resources. Examples of these programs include:

- Speech recognition programs
- Windows Terminal Services
- Billing Applications

## Verifying the Java Runtime Environment (JRE)

The Java Runtime Environment is distributed free of charge. Check to see if the computer has an up-to-date version of the JRE installed:

- Go to a command prompt (Click on **Start>Run**, type *cmd* into the text box, and click on **OK**).
- At the command prompt, type *java -version* and press **Enter**. There should be a space between “*java*” and “*-version*”. The results should look like this:



```
C:\WINDOWS\system32\cmd.exe
C:\>java -version
java version "1.5.0_04"
Java(TM) 2 Runtime Environment, Standard Edition (build 1.5.0_04-b05)
Java HotSpot(TM) Client VM (build 1.5.0_04-b05, mixed mode, sharing)
C:\>_
```

- At the command prompt, type “*exit*” to return to windows.

If the JRE version is older than 1.5\_09, it must be updated. To download the JRE:

- It may be necessary to log in to your computer as a user with administrator privileges.

- Download the JRE file:  
[http://www.SpringMedical.com/Distribution/JRE/jre-1\\_5\\_0\\_09-windows-i586-p.exe](http://www.SpringMedical.com/Distribution/JRE/jre-1_5_0_09-windows-i586-p.exe)
- Double-click on the JRE file (jre-1\_5\_0\_09-windows-i586-p.exe) and follow the installation instructions.

## **Upgrading SpringCharts Networking Option**

### **SpringCharts Networking Option Upgrade Overview**

The SpringCharts upgrade procedure has just a few easy steps: verify hardware requirements, ensure the JRE is at the correct version, upgrade SpringCharts Server on the server, and upgrade SpringCharts Client on all the client computers. When these steps are completed successfully, you may begin using SpringCharts.

### **Upgrading SpringCharts Server (Networking Option) Details**

#### **Warning!**

**DO NOT** proceed with these instructions until you have performed a **backup** of your SpringCharts files.

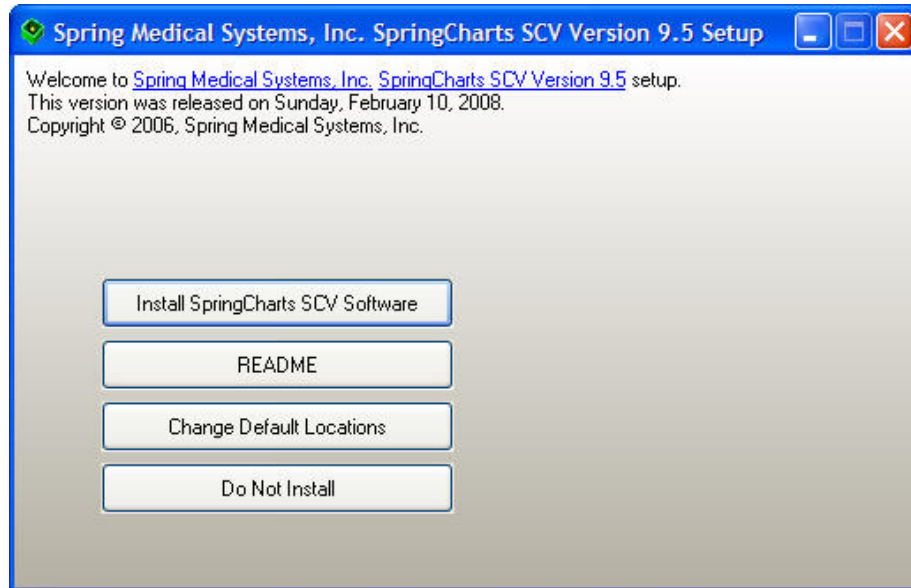
**Because of the extensive changes in the custom vitals feature, todos, and chart alerts, Version 9.5 will convert your data files. What this means is that you will not be able to revert back to Version 8, if you so desire. The only way to do so will be to restore from your last Version 8 backup.**

**NOTE: Ensure you have a V9.5 activation key before proceeding with the installation. If you are upgrading a previous 8.x version, your original 8.x activation key will still be valid. You will not be able to access your SpringCharts files after the upgrade unless you have this activation key.**

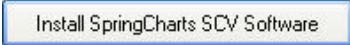



To upgrade SpringCharts Server (Networking Option):

1. Login to your operating system as a user with administrator privileges. Ensure that all SpringCharts programs are closed before continuing with the upgrade.
2. Find the current location of SpringCharts Server files on your computer.
  - For versions of SpringCharts earlier than Version 5.0, the default installation location was C:\Program Files\SCServer\SCServer. If you have this configuration, please contact Spring Medical Systems support for assistance in updating the SpringCharts directory structure.
  - For SpringCharts Version 5.0 and above, the default installation location is C:\Program Files\SCServer. This is the recommended directory structure.Make certain you know the location of your current SpringCharts Server files before continuing with this upgrade.
3. Obtain the SpringCharts Server upgrade software by either:
  - Downloading the **springchartsscvupgrade.zip file**. Then unzipping the downloaded file. One file is enclosed: SCServerUpgrade.exe.

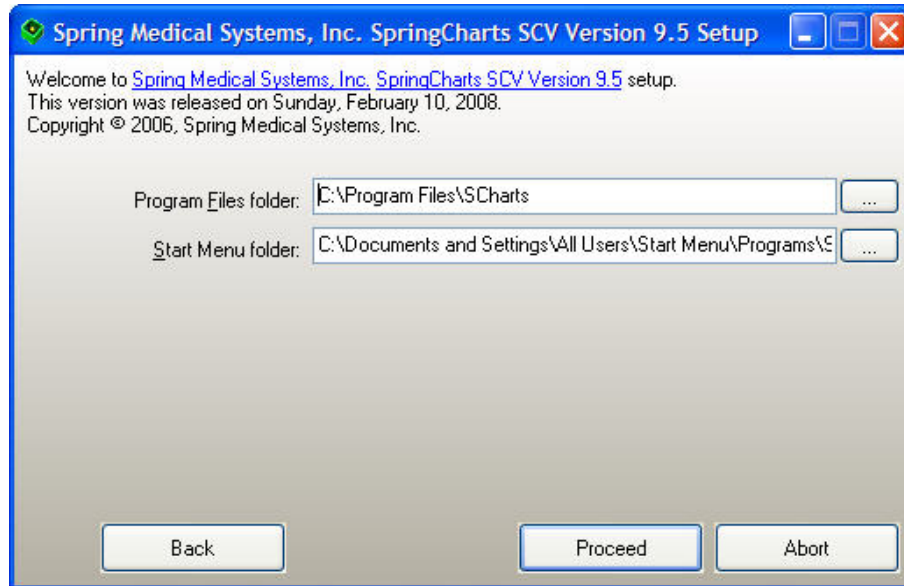
- Or, locating the SCServerUpgrade.exe program on the SpringCharts Installation CD. It is located in the **Upgrade Installations\Windows Programs** folder.
4. Double-click on **SCServerUpgrade**. You will see a screen similar to this:



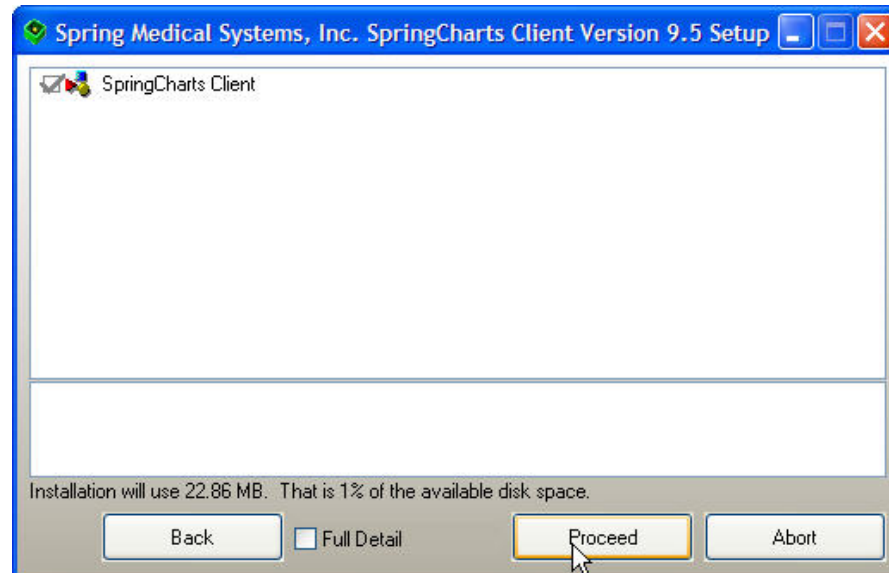
- The four options on this screen are:

	Installs SpringCharts Version 9.5 to the default location.
	Allows the user to change default location.
	Installation information is available by clicking the ReadMe button.
	Quits without making any changes to your system

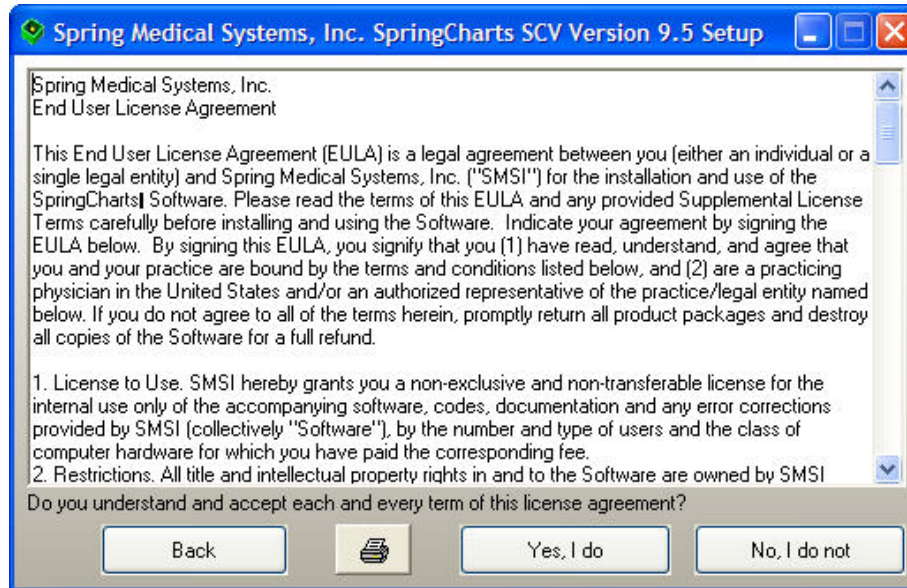
5. Click on the **Change Default Locations** button. You will see a screen similar to this:



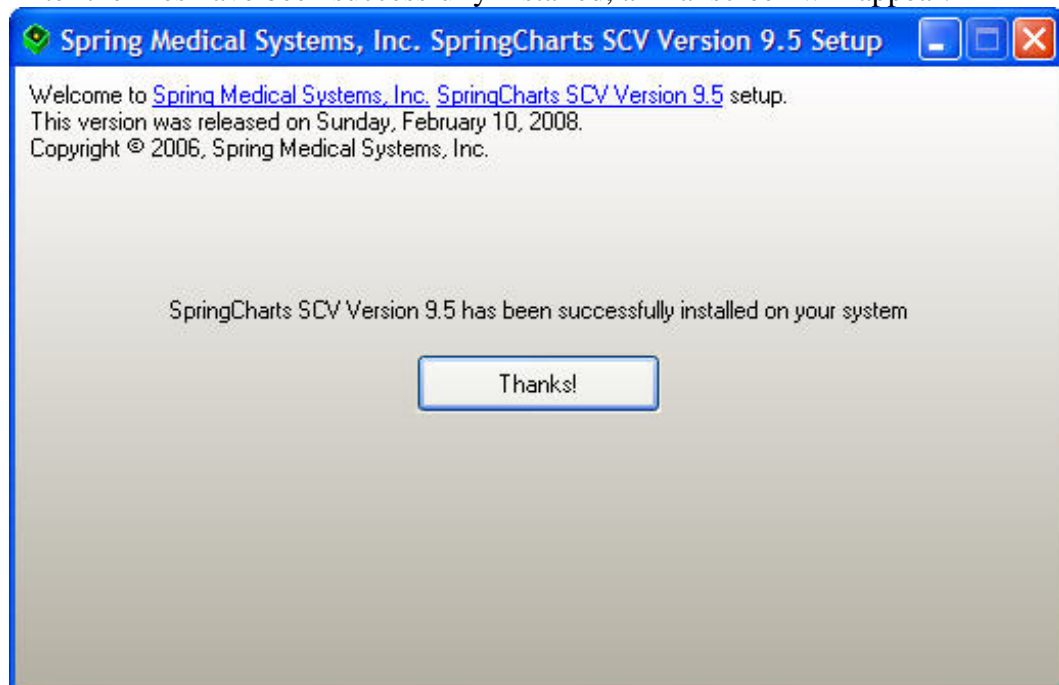
6. Verify that the location listed in the **Program Files folder** box matches the current location of your SpringCharts Server files. If not, enter the current SpringCharts Server files location into the **Program Files folder** box. Click **Proceed**.
7. Next, if you choose a different location to install your upgrade other than the default, a similar screen will display listing the SpringCharts folders that will be installed. Click on **Proceed** to continue.



8. Read then select the “**Yes, I do**” button to accept the license agreement. The installation will begin running at this point.



9. After the files have been successfully installed, a final screen will appear:



10. Click on **Thanks!** to complete the server upgrade.
11. In order to access SpringCharts Server after the upgrade, you must enter your Product Activation Key and your Version 9.5 Key. Double-click on the SpringCharts Server icon located on your desktop to start the program. SpringCharts Server will start up and tell you that SpringCharts Server must be restarted before you can access the system.



12. When you restart SpringCharts, it will ask you to enter your version 9.5 key number (included in your software shipment). Enter your key and press **OK**.



13. Before you can begin running SpringCharts, all the SpringCharts Clients must also be upgraded to the same version of SpringCharts as the server. To upgrade the clients, see the next section titled **Upgrading SpringCharts Client (Networking Option) details**.

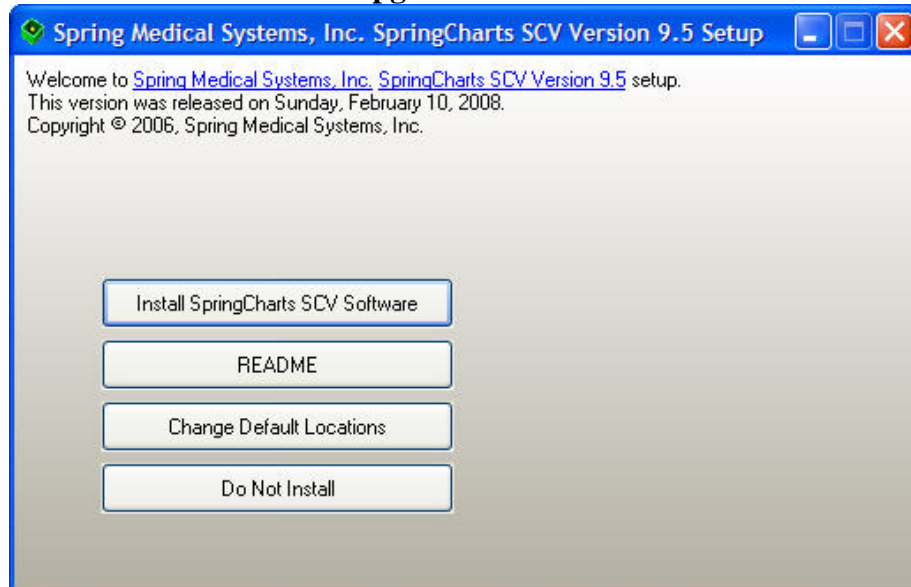
### **Upgrading SpringCharts Client (Networking Option) Details**

To upgrade SpringCharts Client (Networking Option):

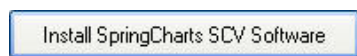
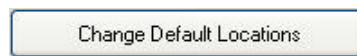
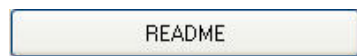
1. Login to your operating system as a user with administrator privileges. Ensure that all SpringCharts programs are closed.
2. Find the current location of SpringCharts Client files on your computer.
  - For versions of SpringCharts earlier than Version 5.0, the default installation location was **C:\Program Files\SCClient\SCClient**. If you have this configuration, please contact Spring Medical Systems support for assistance in updating the SpringCharts directory structure.
  - For SpringCharts Version 5.0 and above, the default installation location is **C:\Program Files\SCClient**. This is the recommended directory structure.

Make certain you know the location of your current SpringCharts Client files before continuing with this upgrade.

3. Obtain the SpringCharts Client upgrade software by either:
  - Downloading the **springchartsscupgrade.zip** file. Then unzipping the downloaded file. One file is enclosed: **SCClientUpgrade.exe**.
  - Or, locating the **SCClientUpgrade.exe** program on the SpringCharts Installation CD. It is located in the **Upgrade Installations\Windows Programs** folder.
4. Double-click on **SCClientUpgrade**. You will see a screen similar to this:



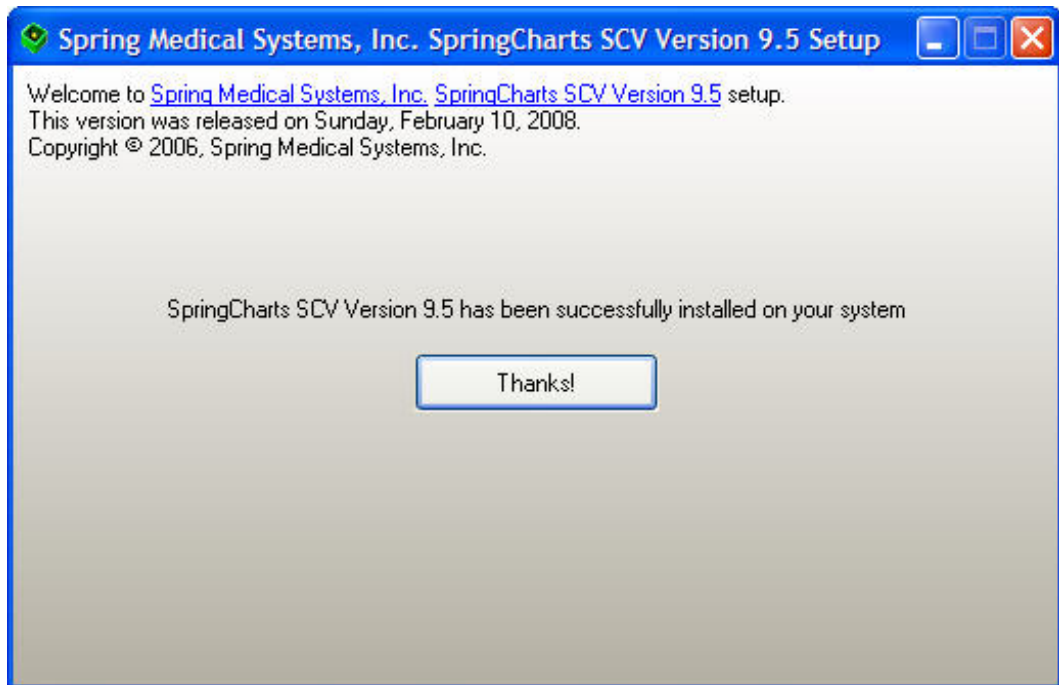
- The four options on this screen are:

- |   |  |
|---|--|
|  | Installs SpringCharts Version 9.5 to the default location.           |
|  | Allows the user to change default location.                          |
|  | Installation information is available by clicking the ReadMe button. |



Quits without making any changes to your system

5. SpringCharts program files will be installed in the default location of **C:\Program Files\SCClient**. This is the recommended installation location. To accept this default, simply click on the **Install SpringCharts Client Software** button.
  - If a different installation location other than the default is desired, click on the **Change Default Locations** button. Enter the new locations, and click **Proceed**. Next (if the default locations were changed), a list of the SpringCharts folders that will be installed is shown. Click on **Proceed** to continue.
6. Verify that the location listed in the **Program Files folder** box matches the current location of your SpringCharts Client files. If not, enter the current SpringCharts Client location into the **Program Files folder** box. Click **Proceed**.
7. Next, a list of the SpringCharts folders that will be installed is shown. Click on **Proceed** to continue.
8. Read and accept the license agreement. The upgrade installation will begin at this point.
9. After the files have been successfully installed, a final screen will appear:



10. Click on **Thanks!** to complete the client upgrade.

## **Upgrading SpringCharts Single Computer Version**

### **SpringCharts Single Computer Version Upgrade Overview**

The SpringCharts upgrade procedure has just a few easy steps: verify hardware requirements, ensure the JRE is at the correct version, and upgrade SpringCharts. When these steps are completed successfully, you may begin using SpringCharts.

### **Upgrading SpringCharts Single Computer Version Details**

#### **Warning!**

**DO NOT proceed with these instructions until you have performed a backup of your SpringCharts files.**

**Because of the extensive changes in the custom vitals feature, todos, and chart alerts, Version 9.5 will convert your data files. What this means is that you will not be able to revert back to Version 8, if you so desire. The only way to do so will be to restore from your last Version 8 backup.**

**NOTE: Ensure you have a new V9 activation key before proceeding with the installation. If you are upgrading a previous 8.x version, your original 8.x activation key will still be valid. You will not be able to access your SpringCharts files after the upgrade unless you have this activation key.**

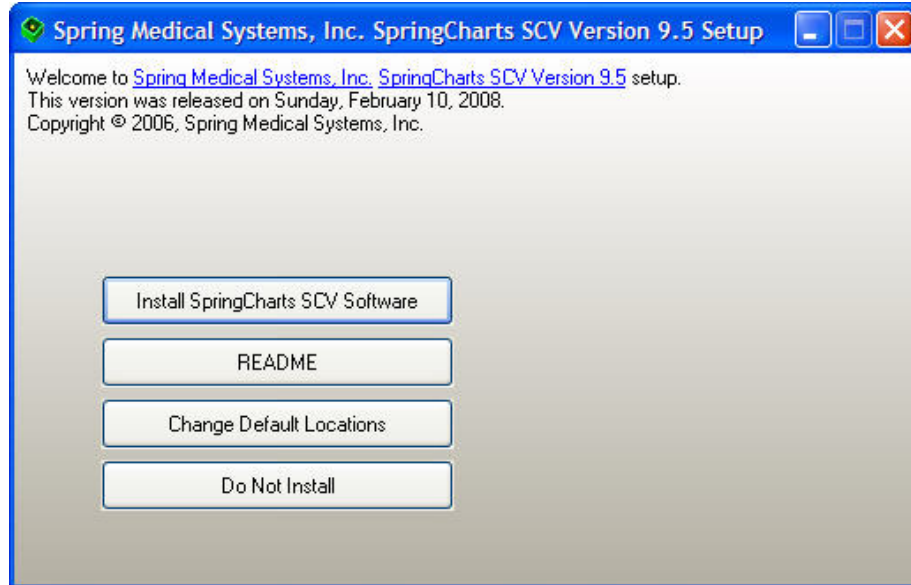
To upgrade SpringCharts Single Computer Version:

1. Login to your operating system as a user with administrator privileges. Ensure that all SpringCharts programs are closed.
2. Find the current location of SpringCharts files on your computer:
  - For versions of SpringCharts earlier than Version 5.0, the default installation location was **C:\Program Files\SCharts\SCharts**. If you have this configuration, please contact Spring Medical Systems support for assistance in updating the SpringCharts directory structure.
  - For SpringCharts Version 5.0 and above, the default installation location was **C:\Program Files\SCharts**. This is the recommended directory structure.

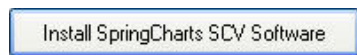
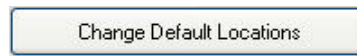

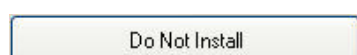
**Make certain you know the location of your current SpringCharts files before continuing with this upgrade.**

3. Obtain the SpringCharts Single Computer Version Upgrade software by either:
  - Downloading the **springchartsscupgrade.zip** file. Then unzipping the downloaded file. One file is enclosed: **SpringChartsSCVUpgrade**.

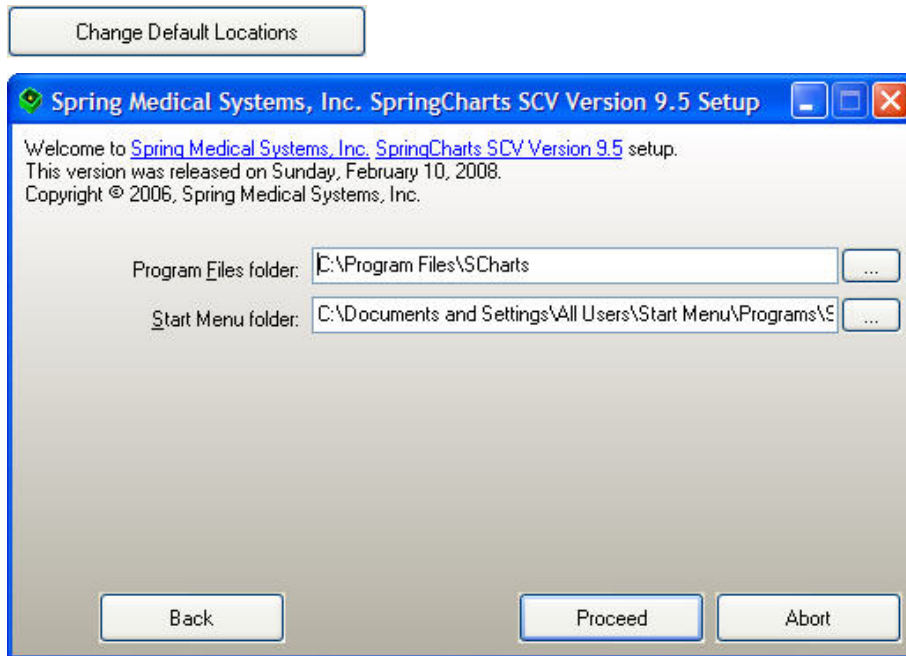
- Or, locating the **SpringChartsSCVUpgrade** program on the SpringCharts Installation CD. It is located in the **Upgrade Installations\Windows Programs** folder.
4. Double-click on **SpringChartsSCVUpgrade**. You will see a screen similar to this. :



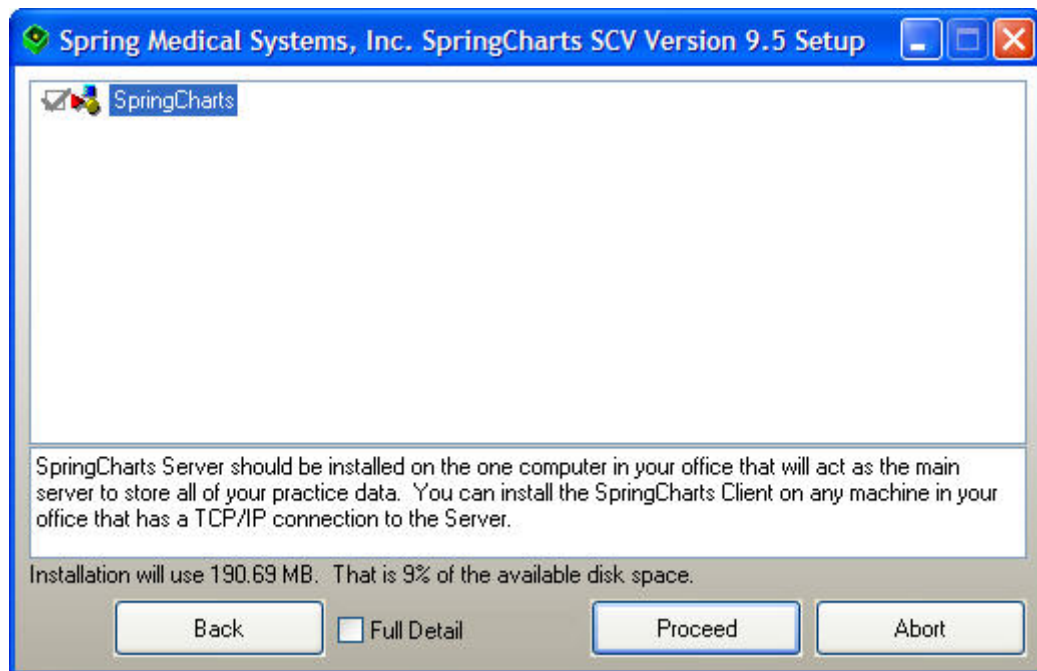
- The four options on this screen are:

	Installs SpringCharts Version 9.5 to the default location.
	Allows the user to change default location.
	Installation information is available by clicking the ReadMe button.
	Quits without making any changes to your system

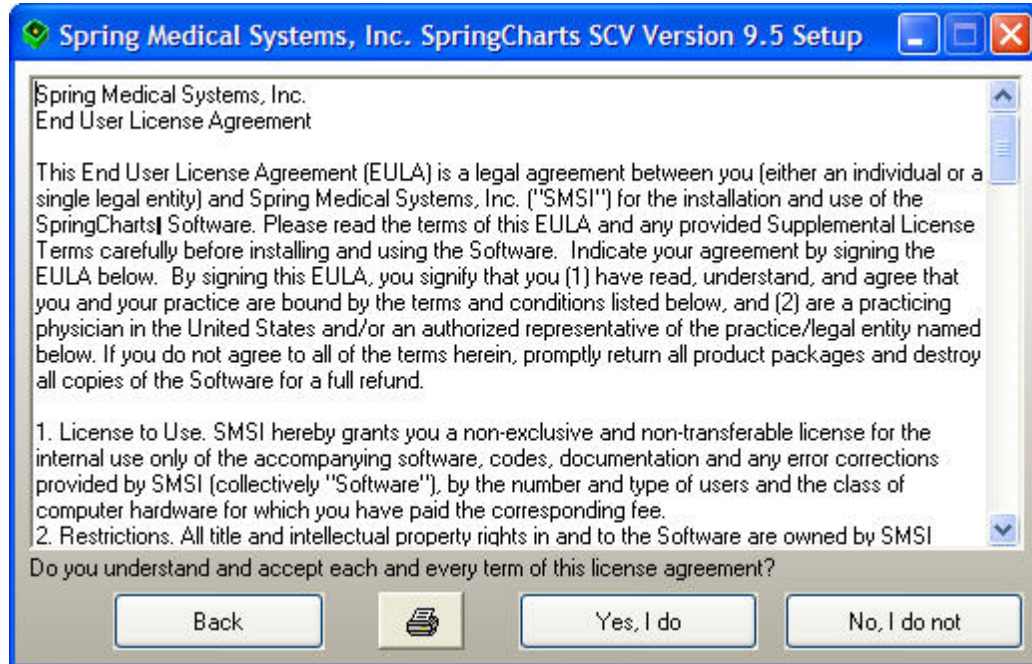
5. SpringCharts program files will be installed in the default location of **C:\Program Files\SCClient**. This is the recommended installation location. To accept this default, simply click on the **Install SpringCharts Client Software** button.
- If a different installation location other than the default is desired, click on the **Change Default Locations** button. Enter the new locations, and click **Proceed**. Next (if the default locations were changed), a list of the SpringCharts folders that will be installed is shown. Click on **Proceed** to continue.



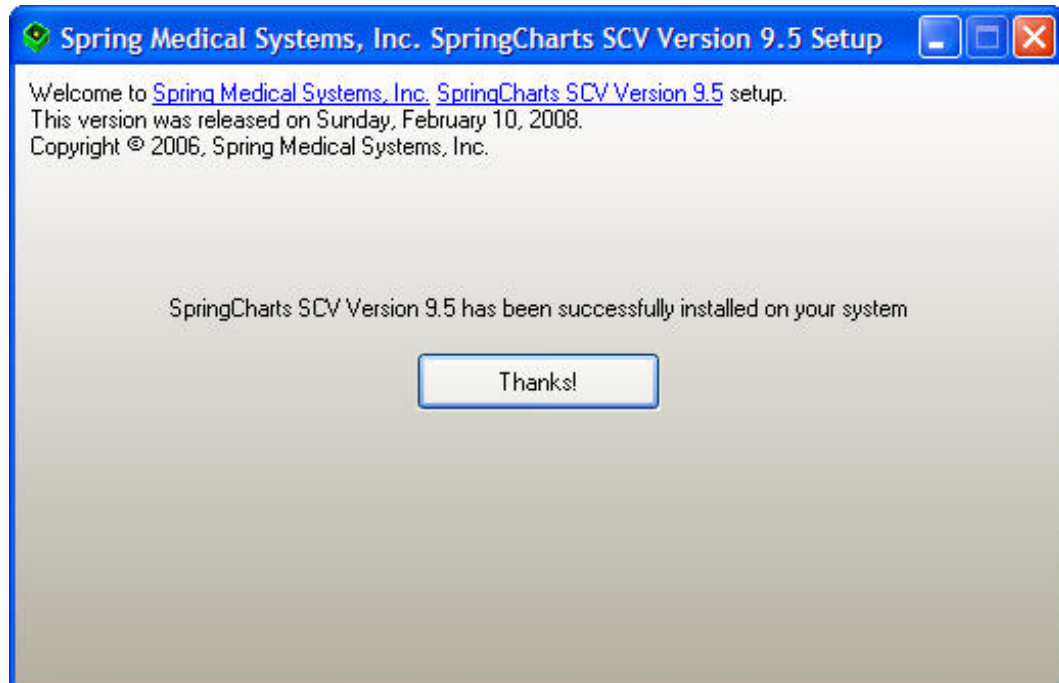
6. Verify that the location listed in the **Program Files folder** box matches the current location of your SpringCharts files. If not, enter the current SpringCharts files location into the **Program Files folder** box. Click **Proceed**.
7. Next, if you choose a location other than the default for your installation, a list of the SpringCharts folders that will be installed is shown. Click on **Proceed** to continue



8. Read and accept the license agreement. The upgrade installation will begin at this point. Click “Yes, I do” to continue.

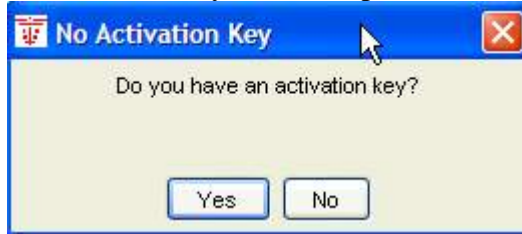


9. After the files have been successfully installed, the following screen will appear:

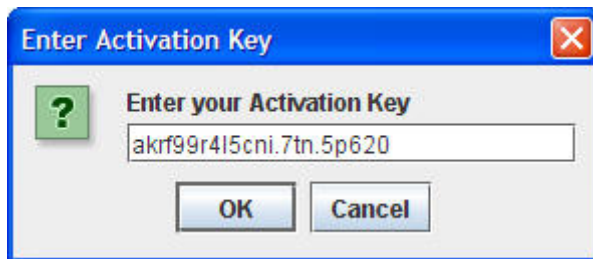


10. Click on **Thanks!** and the SpringCharts upgrade is complete.

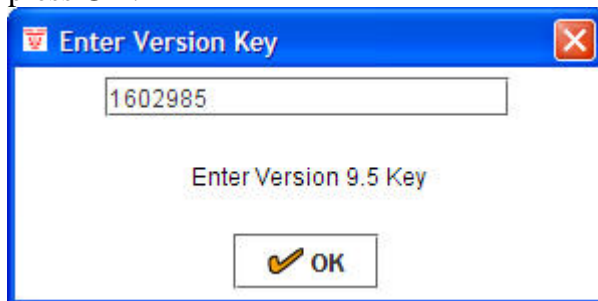
11. In order to access SpringCharts after the upgrade, you must enter your Product Activation Key and a Version 9.5 Key. Double-click on the SpringCharts icon located on your desktop to start the program.



12. Choose **Yes** when you are prompted for your activation keys and enter the new keys carefully. PLEASE NOTE: You will not be able to access your SpringCharts data without these new keys. Your "Activation Key" is the long alpha-numeric "**Purchase Key**" that will be found on the SpringCharts Version 9.5 Activation Key print out included in your software shipment. This key number **MUST** be entered exactly as shown on your printout. Please contact your reseller or Spring Medical support if you have any questions.



13. When you restart SpringCharts, it will ask you to enter your version 9.5 key number (included in your software shipment). Enter your key number and press **OK**.



## **Installation Assistance**

If you purchased SpringCharts from a reseller, please contact your reseller for assistance.

If you purchased SpringCharts directly from Spring Medical Systems, Inc., please email or call us at:

Customer Support: [Support@SpringMedical.com](mailto:Support@SpringMedical.com)

(281) 537-1377